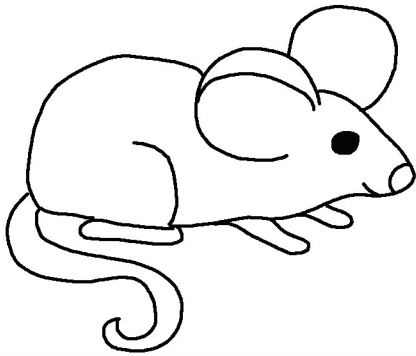
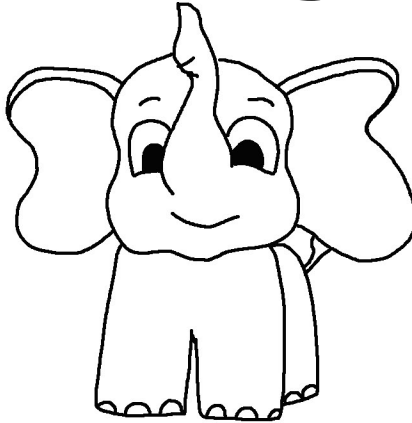


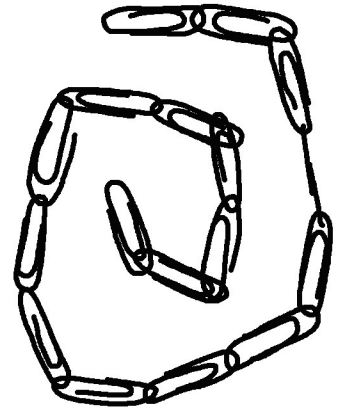
Weak



Strong



Weak



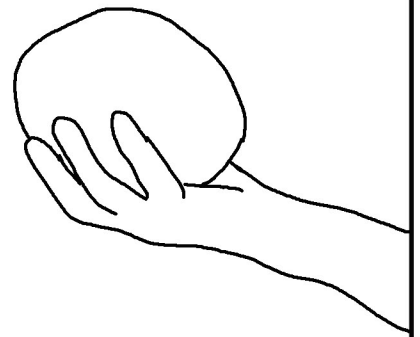
Strong



Weak



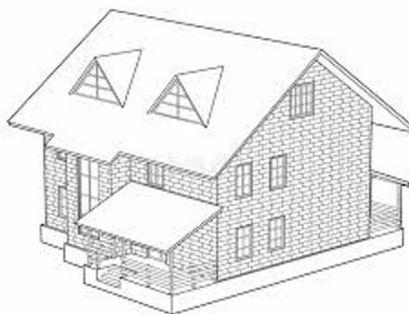
Strong



Weak

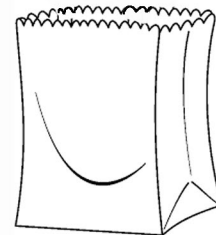


Strong



There are two ways to use these cards. You can lay them all face down and play a matching game or...

you can put them in a paper bag, have one person draw a picture out and describe it to a group. They can guess what the picture is.



the red crystal.org

Come Follow Me-For Primary page 182 "Show one of the children a picture without letting the other children see, and ask the child to describe the picture to the rest of the class. As time allows, let other children take turns doing the same with different pictures. Then invite them to read Ether 12:6 and find the phrase: "Faith is things hoped for and not seen." How do we show faith in Jesus Christ when we cannot see Him?"

ETHER 12:6 AND ETHER 12:23-27